

AI, Education and Leadership

Prof Babu Paul (bspaul@uj.ac.za)

Director, Institute for Intelligent Systems

University of Johannesburg

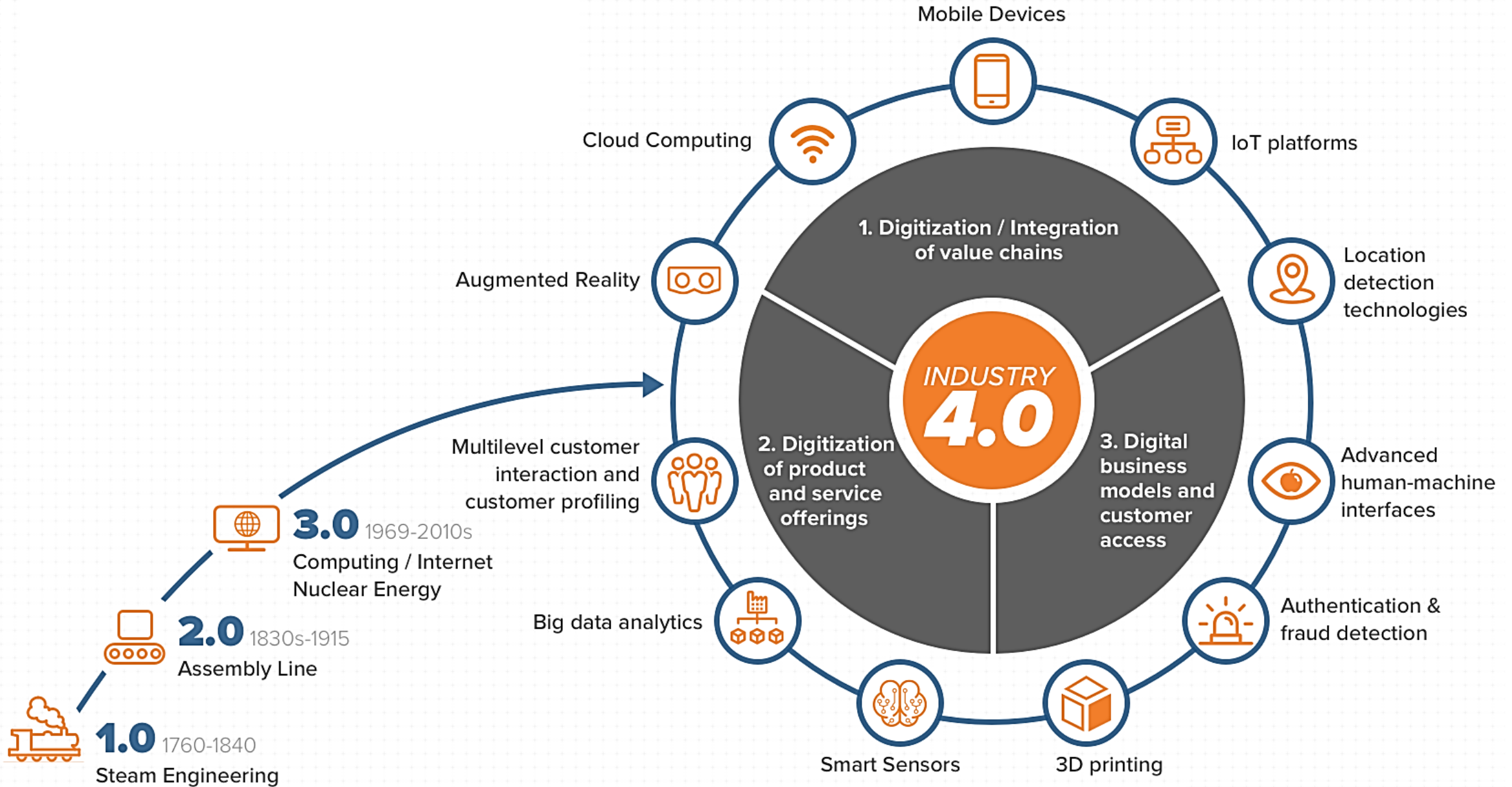


UNIVERSITY
OF
JOHANNESBURG



HAPPY
TEACHERS'
DAY





WHAT IS ARTIFICIAL INTELLIGENCE?

Machine Learning

Using sample data to train computer programs to recognize patterns based on algorithms.



Neural Networks

Computer systems designed to imitate the neurons in a brain.



Natural Language Processing

The ability to understand speech, as well as understand and analyze documents.



Robotics

Machines that can assist people without actual human involvement.



Artificial Intelligence

AI involves techniques that equip computers to emulate human behavior, enabling them to learn, make decisions, recognize patterns, and solve complex problems in a manner akin to human intelligence.

Machine Learning

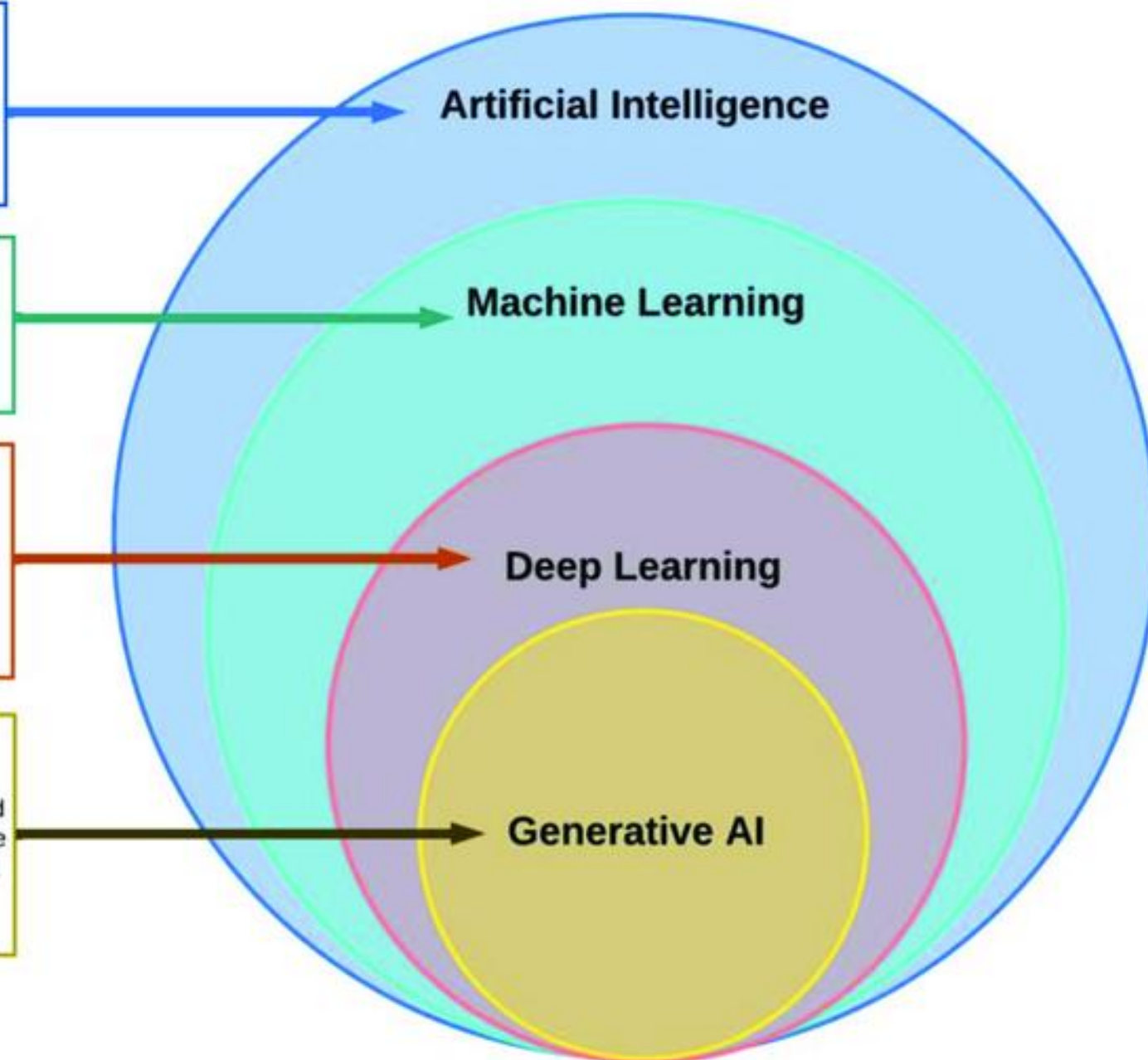
ML is a subset of AI, uses advanced algorithms to detect patterns in large data sets, allowing machines to learn and adapt. ML algorithms use supervised or unsupervised learning methods.

Deep Learning

DL is a subset of ML which uses neural networks for in-depth data processing and analytical tasks. DL leverages multiple layers of artificial neural networks to extract high-level features from raw input data, simulating the way human brains perceive and understand the world.

Generative AI

Generative AI is a subset of DL models that generates content like text, images, or code based on provided input. Trained on vast data sets, these models detect patterns and create outputs without explicit instruction, using a mix of supervised and unsupervised learning.

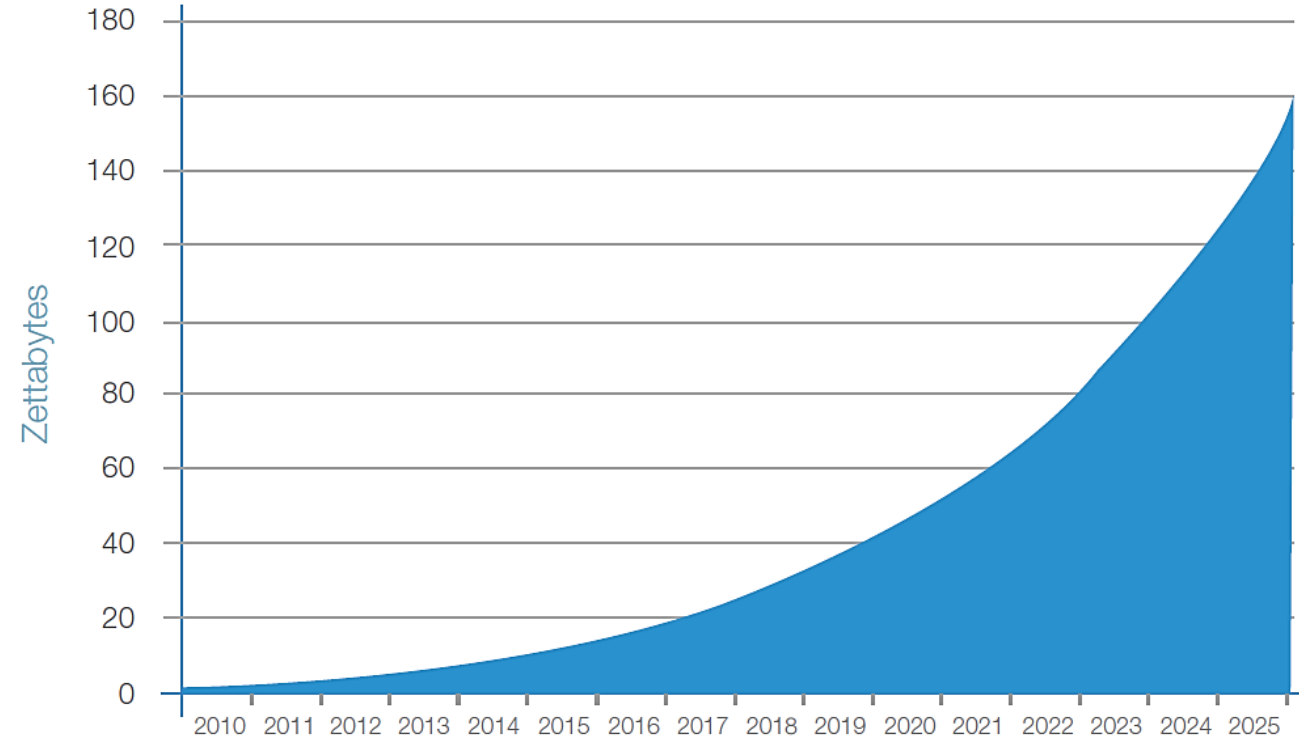


4IR and Data Growth – Feature/Causal Effect

- Forecasts **that by 2025 the** global datasphere will grow to 163 zettabytes / trillion gigabytes

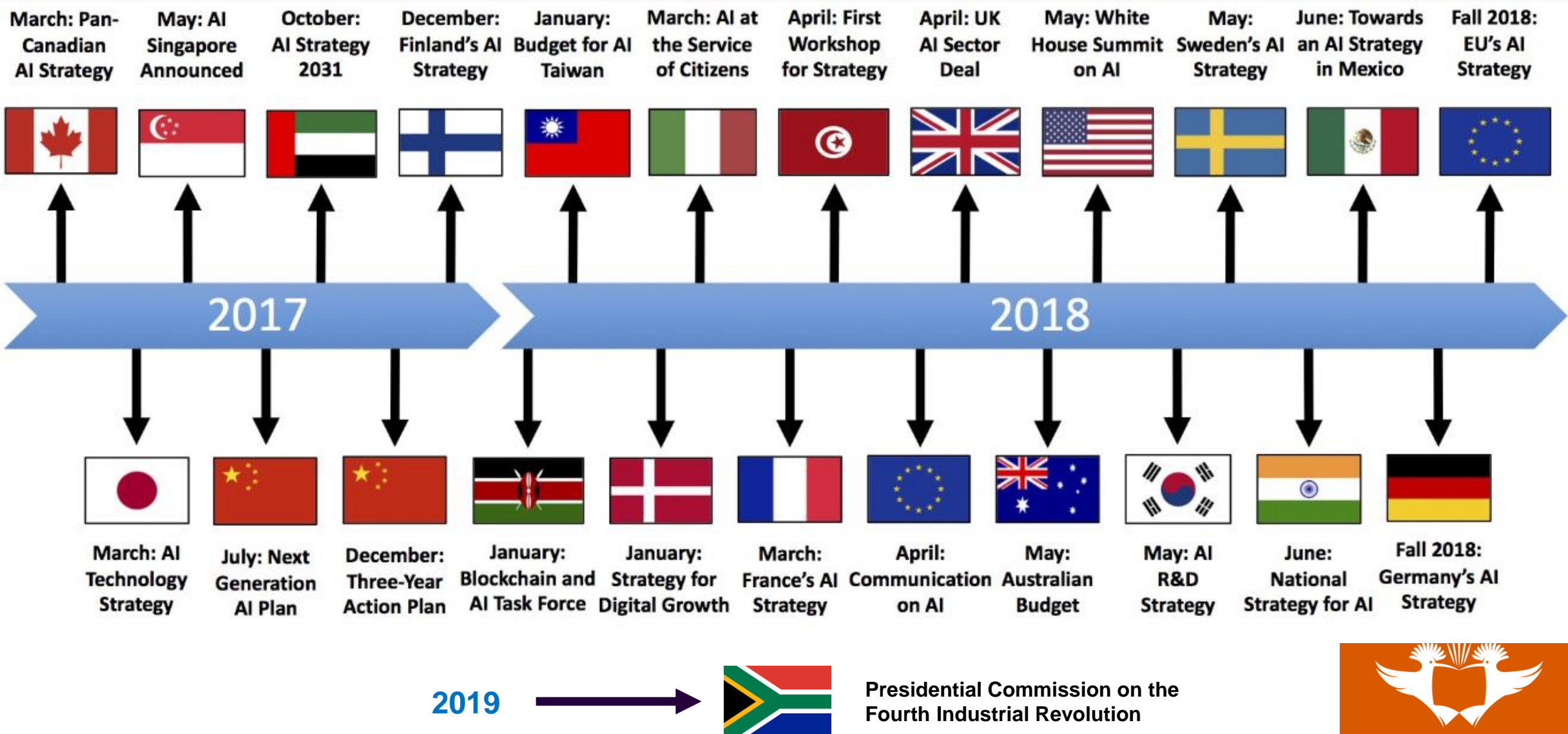
...10²¹ or 1000000000000000000000000

- Data sources consist of social media like Twitter and Facebook, emails, webpages, online searches – any activity on digital devices creates data



Annual Size of the Global Datasphere
(Source: IDC's Data Age 2025 study, sponsored by Seagate, 2017)





Some concerns with AI

- **Privacy**
- **Bias**
- **Security**
- **Explainability**
- **Accountability**
- **Deepfakes**
- **Exploitation of Intellectual Property**







Ensure inclusive and equitable quality education and promote lifelong learning opportunities for all

AI Tools for Education

Intelligent tutoring systems – AutoTutor, SmartTutor

Automated grading and assessment – Gradescope, Cograder

Chatbots and virtual assistants

Curriculum planning

Interactive and learning games

Personalized learning

Smart Content Creation

Proctoring – The Invigilator

Language learning – Duo Lingo app



Way Forward

Quick Wins

off-the-shelf ML/AI products (with necessary adaptations)

- a voice interface to generate class notes – Audio Pen
- a tool to schedule internal meetings
- A tool to make meeting notes – Read.ai



Long Term Projects

long-term projects are more involved than quick wins

off-the-shelf technology generally doesn't suffice for long-term projects

Needs organizational skills or third party to develop AI products



AI is not the goal; rather, it should be the “enabler of the goal”.



**Education is the
manifestation of
perfection already
existing in man.**

SWAMI VIVEKANANDA





“ Education is the most powerful weapon we can use to change the world. ”

~ Nelson Mandela

NGIYA THOKOZA! ro livhuwa!
dankie! ke a leboga! **ENKOSI!**
 thank you! udo livhuwa!
inkomu! **ngiyabonga!**
 ke a leboha!
siyabonqa!

