

**The Impact of AI
in African School
Leadership
Development**

**The challenges and Opportunities of
AI-Empowered Leadership
Development**

**Dr. S. Seyama
Mr. T. Nkuna (Student)**

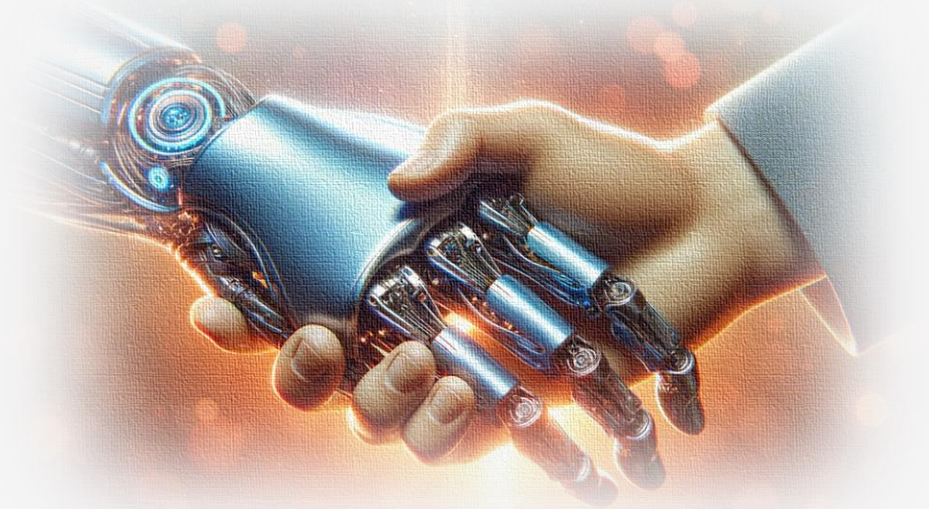


Artificial Intelligence (AI) Technology and Leadership

AI is transforming leadership development worldwide, enhancing decision-making, training personalization, and performance management.

AI-driven leadership can help African nations leapfrog traditional developmental stages, positioning them competitively in the global economy.

Africa's unique socio-economic landscape creates both challenges and opportunities for AI in leadership.



Leadership Today

Morden leadership is progressively linked to both technology and sustainability, as organizations acknowledge the necessity of tackling environmental issues while capitalizing on technological innovations.

SDG 4: Ensure inclusive and equitable quality education and promote lifelong learning opportunities for all.

The impact of technology in education.



AI-empowered leadership uses AI tools and technologies (e.g., machine learning, analytics, virtual coaching) to enhance leadership.



Leadership Today - Tshwane Schools

Tshwane schools: School food gardens in response to the call for sustainable development.

AI-empowered leaders can harness its power to foster collaboration, partnership and effective communication.



Rachio Smart Sprinkler Controller:

An AI-driven irrigation controller that automates watering schedules based on weather forecasts and specific plant needs.



Relevance of AI-empowered leadership

AI in Leadership.

Artificial Intelligence (AI) is rapidly transforming human lives, and leadership development by providing data-driven insights, improving decision-making capabilities, and offering personalized training and coaching.

AI empowers leaders to navigate complex environments with greater accuracy and foresight. Although AI cannot replace workplace leadership, AI technologies such as machine learning and predictive analytics are redefining leadership.

Routine automated tasks, mechanical and administrative activities will be taken over by AI, therefore, future leaders must quickly adjust to this changes and spend their focus on strategic thinking and innovation, increasing the productivity in this fast-paced digital world.



Relevance of AI-empowered leadership

Why focus on Africa?.

Potential and threats that come with AI.

Africa is experiencing rapid urbanization, a youth population boom, and increasing digital penetration, which create both opportunities and challenges for leadership.

Leadership gaps in key sectors such as agriculture, education, healthcare and energy, which hinder sustainable development.



Opportunities in AI-Driven Leadership Development

Key drivers: Economic growth, youth population, and digital transformation demand strong leadership.

- 1 **Enhanced Access to Training**
- 2 **Data-Driven Decision-Making**
- 3 **Identifying and Developing Talent**
- 4 **Virtual Coaching and Mentoring**



Challenges in AI-driven leadership development

- 1 Digital Infrastructure Deficit:** Limited access to reliable internet and modern technology, especially in rural areas, restricts the use of AI tools.
- 2 Limited AI skills and literacy:** Lack of awareness and understanding of AI among current and emerging leaders. There is a need for AI literacy programs to build capacity among leaders at all levels and bridge the skills gap.
- 3 Cultural and Organizational Resistance:** Traditional leadership norms and fear towards technology can hinder the adoption of AI-driven approaches. There is a need to align AI solutions with cultural and organizational values.
- 4 Ethical and Privacy Concerns:** Issues around data security, algorithmic biases, and ethical use of AI pose significant challenges. There are concerns over AI making decisions that could be biased against certain demographics.



Use of AI for African leadership development

AI presents transformative opportunities for enhancing leadership development in Africa, but strategic efforts are needed to overcome existing challenges.

Recommendations:

- **Invest in Digital Infrastructure**
- **Develop AI Literacy Programs**
- **Culturally Adapt AI Solutions**
- **Ethical AI Use**

With the right investments and strategic focus, AI can play a critical role in developing a new generation of leaders in Africa.



THANK YOU!